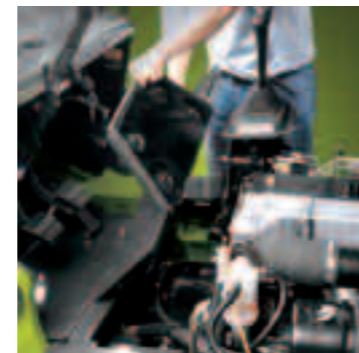




The engine hood is made of steel and is strong enough to withstand all the forces that may act on it, if the seat and safety belt ever come under intense strain, while remaining easy to open wide, using gas cylinders, to allow unrestricted access to the engine compartment. The floor plate can also be easily removed without the use of tools.



- Subject to change without notice -

CLARK
THE FORKLIFT

Your Clark Dealer:

CLARK EUROPE GMBH

Neckarstraße 37
D - 45478 Mülheim an der Ruhr
Tel. +49 208 377336 0
Fax +49 208 377336 36
email: info-europe@clarkmheu.com
www.clarkmheu.com

CLARK
THE FORKLIFT

CMP



CMP 40/45/50S D/L
Diesel or LPG engine
4,0/4,5/5,0 t

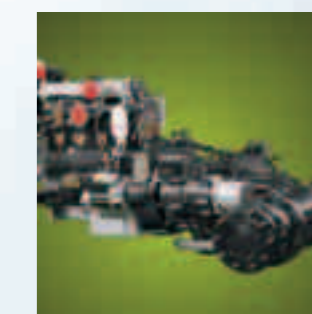
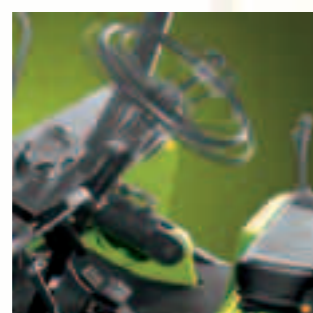
En. - 124 01/2007



CMP is Clark's robust forklift truck series for daily use. These versatile forklift trucks by Clark offer the attractive possibility of coping with most material handling tasks at low investment costs. In addition to Clark's high-tech forklift trucks in the GEN-2 series with their many varied options for customised adaptation to demanding tasks, the CMP series by Clark is the consistent answer to all expectations made of a low-cost, high-powered and permanently reliable, simple forklift truck. Clark CMP forklift trucks can be used wherever economic working takes top priority.

The CMP series of diesel and LPG trucks offers load capacities of between 1.5 and 7.5 tonnes, providing limited, standard equipment and all the quality features that turn a good standard machine into a genuine, robust Clark truck:

Easy for the driver to access and great freedom of movement once seated - the driver has a firm grip of all the controls and has an unrestricted view of the instrument panel. Excellent visibility through the strong clear-view mast mean operations are quick and easy. The quiet yet powerful engines and special attention to vibration keep the working environment free of fatigue.



Hardwearing components and a long service life are in-built into the CMP series. The efficient, economical industrial engines and Clark's tried and tested torque converter transmission and drive axle, all combine to produce a compact unit characterised by excellent reliability.

Many components have already proved themselves in testing conditions - including the torsional-resistant frame, the strong mast, the hydrostatic steering and the powerful hydraulic lifting system.